

7210 Wallace Dr, Central Saanich

\$2,800,000



Ideally located on the Saanich Peninsula just 20 minutes to downtown Victoria, this unique 20 acre piece of ALR land awaits your ideas and imagination. Potential uses include agriculture, aquaculture, equestrian, greenhouse or construct a beautiful single family home with secondary secondary residence (plans available). Currently, the property houses a large warehouse +/- 9,700sf with 20 foot ceilings and substantial infrastructure/earthworks has been implemented on the land. The land has been levelled and tiered from Wallace to Stellys Cross Road. ALC may allow 1.57 acres to be subdivided off the main piece (buyer to make own enquiries). Just a short drive to Brentwood Bay, marinas, beaches and all amenities. (id:56120)

KEY INFORMATION

MLS® 951049

Land Only

Keating

o Bedrooms

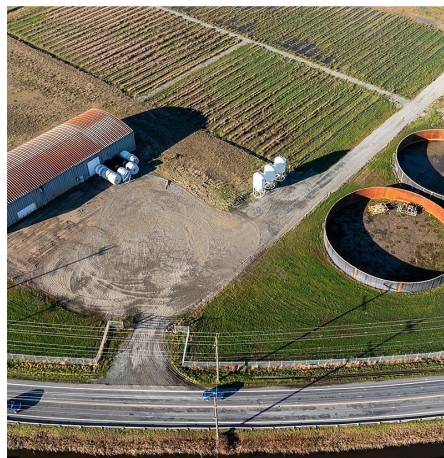
o Bathrooms

o SF

892,545 SF Lot

FEATURES

Listed By: Pemberton Holmes - Cloverdale



rennie