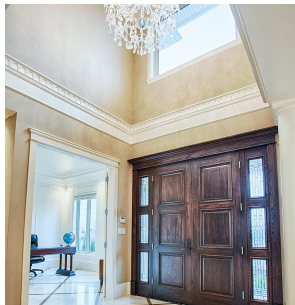


5538 Meadedale Drive, Burnaby

\$3,650,000



Professional high quality 7 bedroom + 6 bathroom home located in the quiet neighbourhood of Parkcrest in Burnaby North. Custom built 3 level house with a family friendly yard & covered patio for entertaining. Close to Holdom Station, Burnaby North Secondary School, Kensington Plaza, bus transit, and elementary school. SFU is approx. 10 min drive. The Amazing Brentwood Mall is approx. 5 min drive away. High quality stone kitchen island, countertops, exterior and floor tile throughout. 2 car garage parking + 2 car private/gated parking in the back. Wet bar, theatre room, 2 bedroom basement suite w/ separate entrance and city views. Call today for your private showing!

KEY INFORMATION

MLS® R2861688

Residential Detached

Parkcrest

7 Bedrooms

6 Bathrooms

4,320 SF

7,200 SF Lot

FEATURES

Year Built: 2017

Views: City

Listed By: Skyline West Realty

rennie