

1121 Hamilton Street, New Westminster

\$2,058,000



Developer/Investors Alert! Lot ready with C-2A zoning allows 1st Story Commercial Businesses and 3 storeys of residential development above. 4-Plex with Separate Entry Units complete with their own gas/elec/HW tank. Shared Laundry. Central Location near Skytrain/Moody Park/Pool/School/Shopping. Perfect rental income now into redevelopment later.

KEY INFORMATION

MLS® R2861642

Multifamily

Moody Park

5 Bedrooms

4 Bathrooms

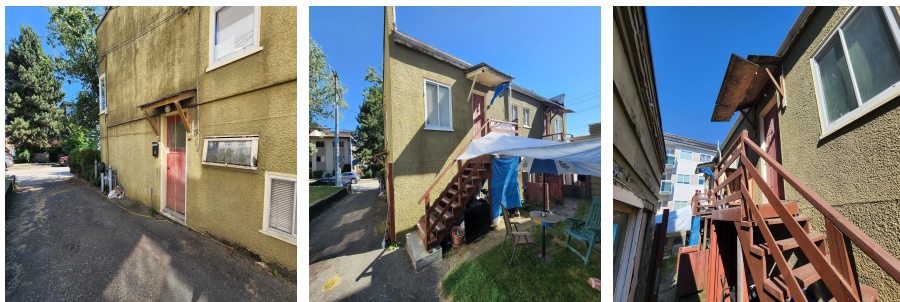
2,812 SF

4,818 SF Lot

FEATURES

Year Built: 1939

Listed By: Royal Pacific Realty (Kingsway) Ltd.



rennie