

# 5108 Cedarwood Court, Abbotsford

\$2,299,000



Retreat from urban life to this secluded 6-bed, 4-bath oasis on Sumas Mountain with stunning valley views. The kitchen boasts a 10-ft island and a spacious pantry. The south-facing deck has everything for year-round relaxation with wind-blocking screens and heaters. The bright 2-bed basement suite opens to its own patio. Built with solid 2x6 construction, this home features laundry hookups on every floor and a wood-burning fireplace. The landscaped grounds with irrigation, vegetable garden, pond, and fountain might just make you say “I do - need this home in my life” Ample parking available, with plans for an addition included. No open houses, please book a private showing.

## KEY INFORMATION

MLS® R2861095

Residential Detached

Sumas Mountain

6 Bedrooms

4 Bathrooms

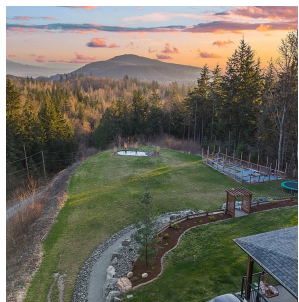
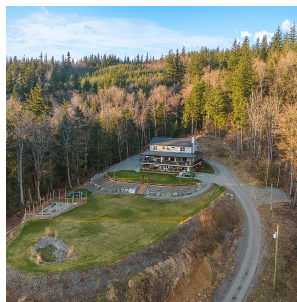
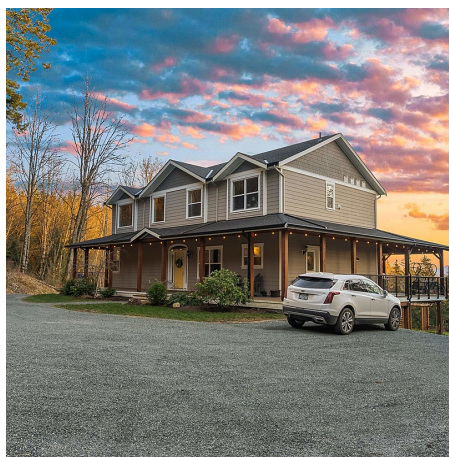
4,053 SF

## FEATURES

Year Built: 2016

Views: Valley

Listed By: RE/MAX Truepeak Realty



rennie