

# 136 16275 15 Avenue, Surrey

\$949,900



SUNRISE POINTE - Rarely available 3 bedroom townhome in gated community in South Surrey situated in quiet cul-de-sac. Well maintained home features a floor plan that flows with day to day living. Main floor features living room with gas fireplace, dining room with vaulted ceiling and two sliding doors out to south facing patio. Tranquil outdoor space is surrounded by lush landscaping, mature trees and greenery. Bright white kitchen and eating area boasts newer appliances. Spacious bedroom/office on main floor (11'10x11'8). Upstairs features two large bedrooms, including a primary bedroom with fireplace. Bonus: on-demand hot water, radiant in-floor heating and 2 skylights. Active clubhouse with many social activities. Walking distance to Chan's Market. Great neighbours and well run strata.

## KEY INFORMATION

MLS® R2862093

Residential Attached

King George Corridor

3 Bedrooms

3 Bathrooms

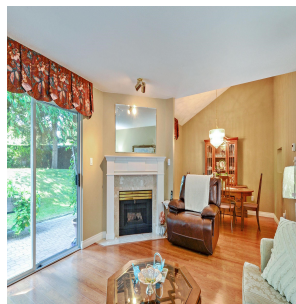
1,822 SF

## FEATURES

Year Built: 1992

Views: garden

Listed By: RE/MAX Colonial Pacific Realty



rennie