

# 1028 Eyremount Drive, West Vancouver

\$8,800,000



Opportunity to secure the premier south-facing lot in British Properties. What sets this property apart is its extraordinary dimensions: while a front lot line of 100ft and depth of 225ft are standard for the area, this parcel boasts a REAR LOT LINE EXCEEDING 174FT—more than double the length of others in the area. Engage your architects to leverage this distinctive aspect of the property. The extended rear lot line offers boundless potential to enhance your building plans, setting your vision apart from the ordinary. Seize the chance to craft your dream home here. The flat driveway and distinctive topography of the lot are sure to ignite your imagination, empowering you to transform your dreams into a breathtaking reality. BY APPOINTMENT ONLY! DO NOT WALK ON PROPERTY WITHOUT AN APPOINTMENT

## KEY INFORMATION

MLS® R2862600

Residential Detached

British Properties

4 Bedrooms

5 Bathrooms

4,866 SF

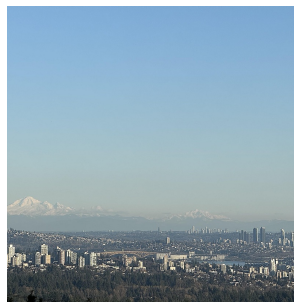
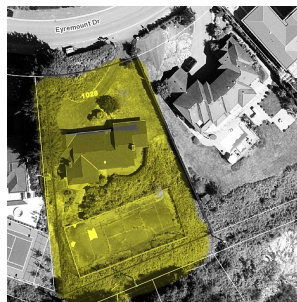
28,000 SF Lot

## FEATURES

Year Built: 1950

Views: CITY, OCEAN, MOUNTAIN VIEWS

Listed By: Royal LePage Sussex



rennie