

# 15 Ranelagh Avenue, Burnaby

\$3,298,000



Jewel of Capital Hill, built by Supna Homes! Nested on the westside of the hill. Boasting 6 BDRMS & 7 BATHS, this stunning residence spans over 3400 sq/ft across 3 lvls, offering an abundance of space and comfort. Enjoy extraordinary 270-degree views encompassing Burnaby, Richmond, Vancouver downtown, ski hills, & the iconic Lions Gate Bridge from three decks, including a private rooftop oasis. The high-end finishes throughout showcase the home's exquisite craftsmanship, while the integration of smart home technology, Control 4 automation, and state-of-the-art systems for lighting, music, and blinds add a touch of modern convenience. A legal two-bedroom basement suite, providing both functionality & additional living space. Situated just minutes away from the Capital Hill viewpoint!

## KEY INFORMATION

MLS® R2862711

Residential Detached

Capitol Hill

6 Bedrooms

6 Bathrooms

3,410 SF

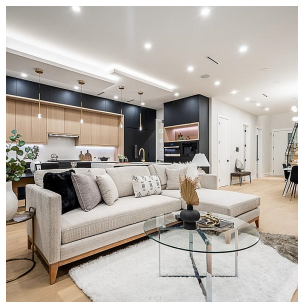
3,993 SF Lot

## FEATURES

Year Built: 2024

Views: MOUNTAIN

Listed By: RE/MAX Crest Realty



rennie