

# 911 Sixth Street, New Westminster

\$2,588,000



**LAND ASSEMBLY** – This 7867 Square Foot lot is part of an assembly that can cover 30,000 square feet to potentially larger. Nice flat land with lane. Currently zoned RGO Townhome but has a neighbour directly to the east that was rezoned through a DP to 2.8 FSR 6 Storey and is almost completed. The city is favoring Nonprofit/Rental offset for density but of course talk to City Hall. There is nothing like this assembly in New West at current. Across from the Highschool, close to parks and walkable to all shopping in popular uptown which is the “Hub” of New West. On a bus route with a 10 minute bus to skytrain and 15 minute drive to Highway 1. Drive by this one to see site and new build right next door of a 6 storey.

## KEY INFORMATION

MLS® R2862848

Residential Detached

Glenbrooke North

5 Bedrooms

2 Bathrooms

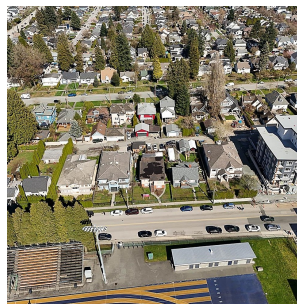
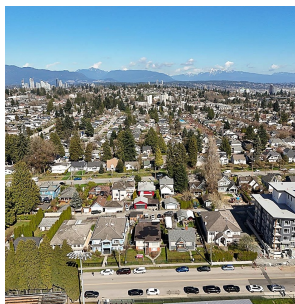
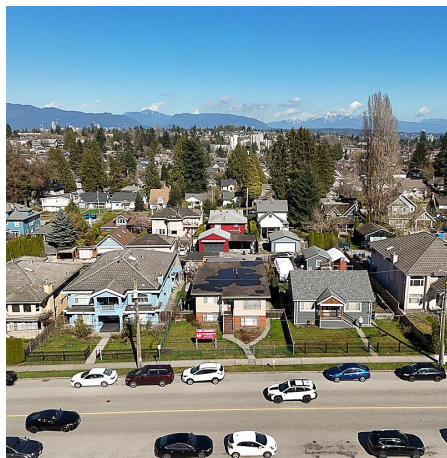
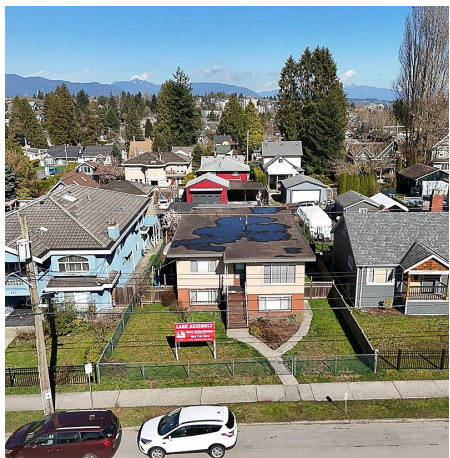
2,904 SF

7,867 SF Lot

## FEATURES

Year Built: 1906

Listed By: Stonehaus Realty Corp.



rennie