

210 8400 Lansdowne Road, Richmond

\$465,000



Welcome to Lexington Square, located in the heart of one of Richmond's most sought-after neighbourhoods. Steps away from Lansdowne Mall, Skytrain, Kwantlen University, and so much more, this location cannot be beat. The unit offers a functional floor plan with generously sized bedrooms, ample in-suite storage, and large windows that bring in an abundance of natural light. Residents can enjoy access to a beautiful private courtyard and outdoor pool, ideal on those warm summer days. Rentals allowed and unit includes 1 parking stall. Perfect for an investment or the next place you call home – this is the opportunity you've been waiting for!

KEY INFORMATION

MLS® R2863141

Residential Attached

Brighthouse

2 Bedrooms

1 Bathroom

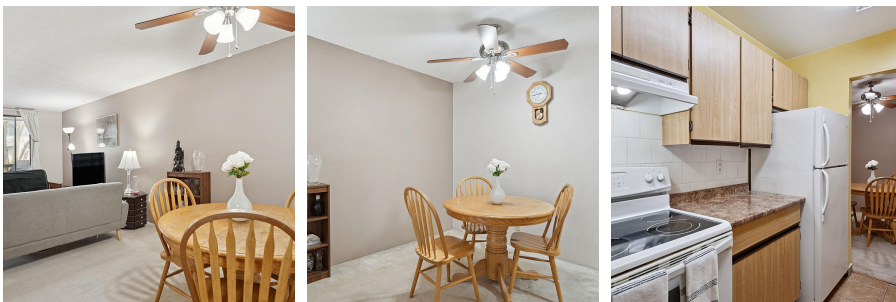
884 SF

\$456.19 Maintenance Fees

FEATURES

Year Built: 1982

Listed By: rennie & associates realty ltd.



Hannah Lee
778.386.0851
hlee@rennie.com
rennie.com/hannahlee

rennie