

# 4491 Boundary Road, Richmond

\$3,225,000



## LAND ASSEMBLY + DEVELOPMENT

**OPPORTUNITY!** This Property is part of a 3+ Acre Land Assembly with Local Area Plan Zoned Neighbourhood Residential-Townhouse 0.75 FAR with the potential for Residential High Density Townhouses (as per 4300 Thompson Rd). Current home is in great condition and can be rented out till ready to develop. Central Location makes this Land Assembly one of the best on the Markets.

## KEY INFORMATION

MLS® R2863608

Residential Detached

Hamilton

4 Bedrooms

3 Bathrooms

2,798 SF

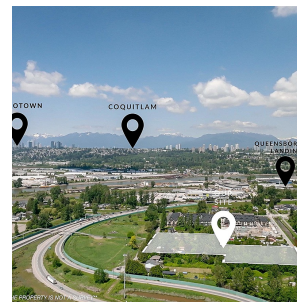
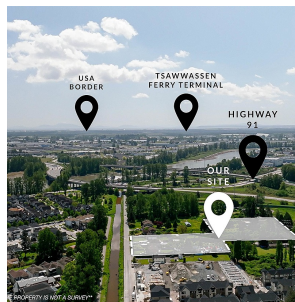
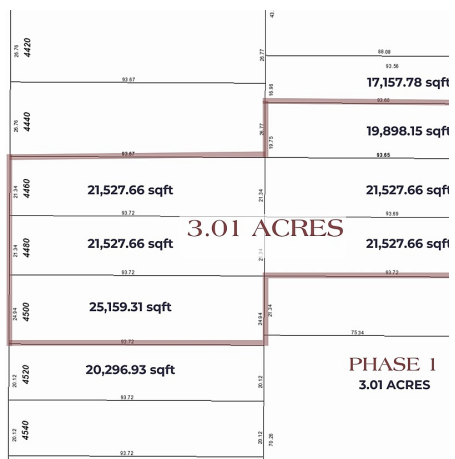
19,909 SF Lot

## FEATURES

Year Built: 1976

Views: CANAL

Listed By: RE/MAX Real Estate Services



rennie