

61 7128 Stride Avenue, Burnaby

\$869,999



2 level Corner unit 2 bedrooms 1 & 1/2 bathroom townhouse w/roof deck. Sunny & Bright, quiet & safe neighbourhood. Functional layout w/open kitchen concept. Two tandem Parking 1 locker. Large roof deck with ample space for BBQ & MORE. Convenient location, close to Public library, transit(10 minutes walk to Edmond Station ,bus loop) and school Measurements from Strata Plan, buyer verify if important. Tenanted ,36 Hours notice required to show.

KEY INFORMATION

MLS® R2862927

Residential Attached

Edmonds

2 Bedrooms

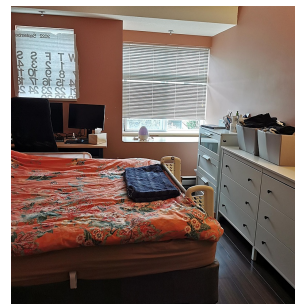
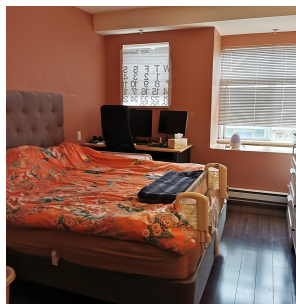
2 Bathrooms

1,034 SF

FEATURES

Year Built: 2002

Listed By: Royal Pacific Riverside Realty Ltd.



rennie