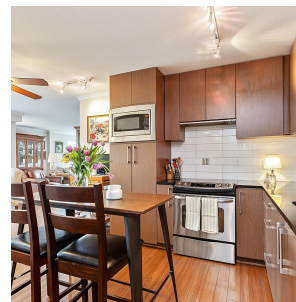


310 15795 Croydon Drive, Surrey

\$835,000



INSIDE UNIT! Immaculate move-in condition rarely found bright THREE bedrooms and two-bathroom condominium corner unit. Over 1300 square feet. The primary bedroom is located on the opposite side of the other two bedrooms for privacy. If downsizing, you can bring your current home's furniture as the living and dining rooms are elegant and spacious. Private west facing balcony. Three side-by-side parking spots, (One EV charger spot available for residents), one locker included with additional available to rent from strata. Two cats or two dogs are allowed with no size restrictions. Rentals are allowed and no age restrictions. Located in the heart of the Shops at Morgan Cross and Grandview Corners. Dining, shopping, fitness, dog parks and more abound for your enjoyment. A/C heat pump allowed.

KEY INFORMATION

MLS® R2863156

Residential Attached

Grandview Surrey

3 Bedrooms

2 Bathrooms

1,302 SF

\$563.92 Maintenance Fees

FEATURES

Year Built: 2011

Listed By: Homelife Benchmark Realty Corp.

rennie