

116 1310 Mitchell Street, Coquitlam

\$1,249,000



Welcome to Forester Two at Burke Mountain Coquitlam. Brand new home with beautiful city views, 1459 sqft living area, total 4 bdrms, 3 full baths. One bdrm and full bath on main floor, 3 bdrms on upper level. This home features a spacious and bright living area with large windows offering plenty of natural light. The modern kitchen boasts stainless steel appliances, sleek cabinetry and quartz countertops, perfect for cooking and entertaining. Primary bdrm has WIC and ensuite bath w/double sink vanity. Side by side double garage. Home near the club house and swimming pool. Location close to parks, schools, shopping, transit and future shopping centre.

KEY INFORMATION

MLS® R2863824

Residential Attached

Burke Mountain

4 Bedrooms

3 Bathrooms

1,459 SF

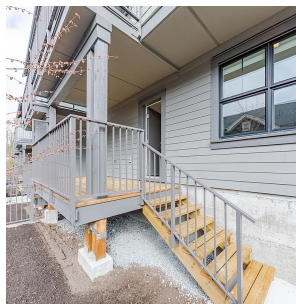
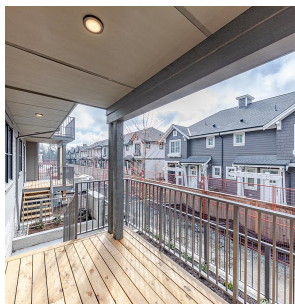


FEATURES

Year Built: 2024

Views: CITY VIEW

Listed By: Royal Pacific Tri-Cities Realty



rennie