

9727 Ladner Trunk Road, Delta

\$14,888,000



An incredibly desirable location in Delta with grand frontage of 1118 ft of Approx.55 ACERS, has 3 legal addresses, with 3 existing dwellings currently on 2 addresses in central location with surrounding restrains, gas stations, and transportation routes.Come and enjoy \$6000 monthly income from duplex,\$1200 from another dwellings and \$3500& \$800 rent from other dwellings and Shed & 50 Acers farm \$75,000.00 lease.Property has 2 neighbouring gas stations within walking distance to Tim Hortons & White Spot,Delta Port, Ferries, and Vancouver. Shopping/amenities are only 10 minutes away with your choice of Ladner or Delta shops at your disposal.A great place with a great view of the mountains and an ideal spot to see the sunsets/ rises!Very Rare Property!!

KEY INFORMATION

MLS® R2863802

Residential Detached

East Delta

3 Bedrooms

1 Bathroom

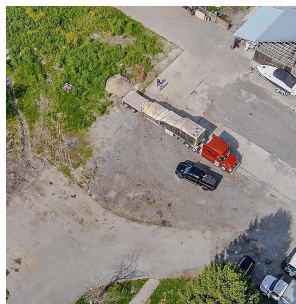
3,162 SF

FEATURES

Year Built: 9999

Views: NORTH SHORE MOUNTAIN, SUNSETS

Listed By: Planet Group Realty Inc.



rennie