

29320 Mctavish Road, Abbotsford

\$2,799,000



PRIME BRADNER location on McTavish with surrounding mtn views & 10 acres of beautiful rolling terrain. This 3,769 sq. ft. 5 bed, 3 bth rancher w/side walk out bsmt was professionally renovated by Lynwood Homes in 2010. Excellent floor plan that features a nice kitchen w/western views of property. The L/R is great for family & boasts mtn scenery to the east. D/R walks out to back deck/patio area. 4 beds on main flr incl primary w/ensuite and WIC. Large mud/lndry room for everyone. 5th bed in the bsmt & lots of room for games, media & gym. 2 sep ent creates potential suite options with this amount of space. A must see! Unreal building site for a future new home located near centre of the property. Bradner is home to flower festivals, parades, car shows, & more. YOU WILL LOVE IT HERE!

KEY INFORMATION

MLS® R2864461

Residential Detached

Bradner

5 Bedrooms

3 Bathrooms

3,769 SF

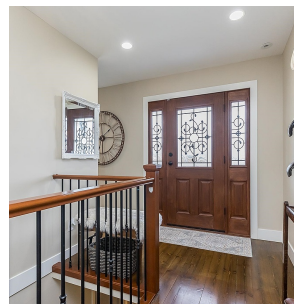
435,600 SF Lot

FEATURES

Year Built: 1972

Views: Mountains & Acreage

Listed By: Homelife Advantage Realty Ltd.



rennie