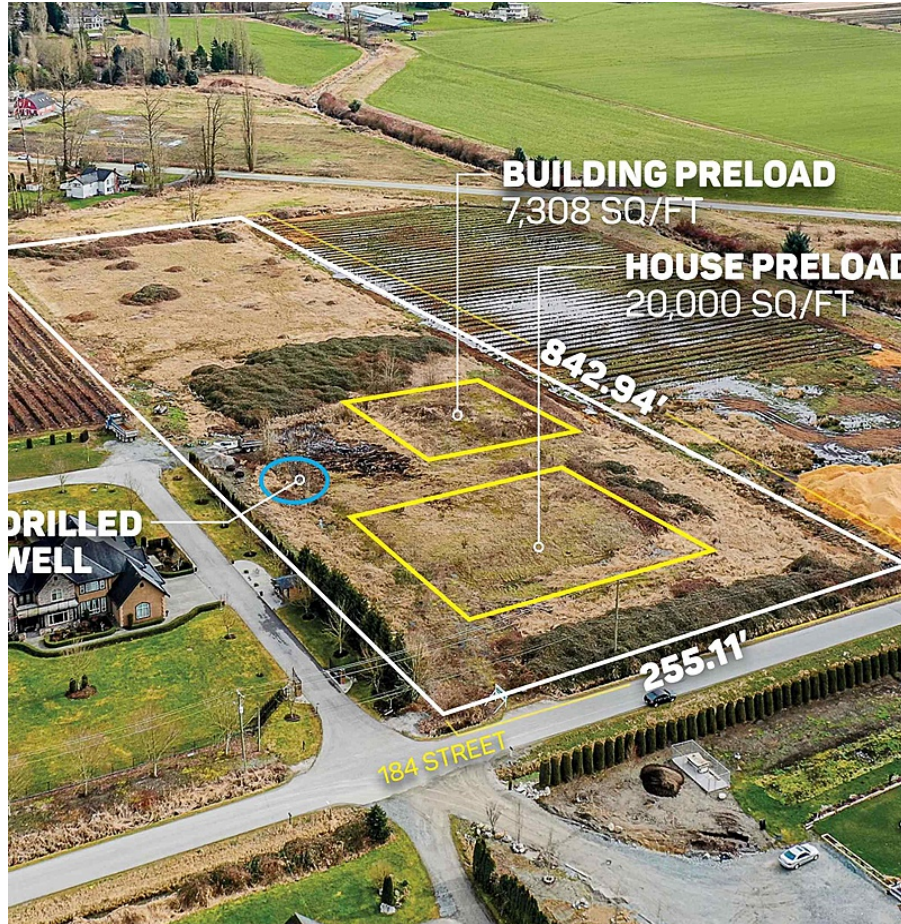


# 8476 184 Street, Surrey

\$2,988,000



5 ACRES - PRELOADED AND READY TO BUILD in Port Kells. Ready to build a 5,400 SQ/FT Home on a 20,000 SQ/FT Pre-load pad and ready to build a Building on a 7,308 SQ/FT Pre-load pad. Great location to build your dream home and/or start a hobby farm. Fertile soil suitable for various crops, fruits & vegetables. Easy Access to Highway #15 (176 Street), Fraser Highway, Highway #1 (Trans-Canada), and Golden Ears Way. Close to all amenities.

## KEY INFORMATION

MLS® R2862300

Land Only

Port Kells

0 Bedrooms

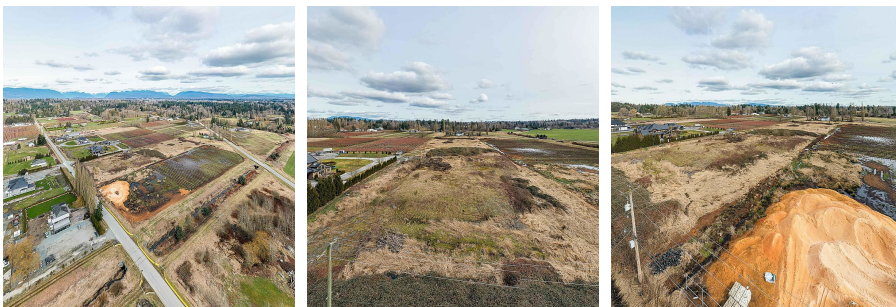
0 Bathrooms

0 SF

## FEATURES

Views: Mountain and Valley Views

Listed By: eXp Realty (Branch)



rennie