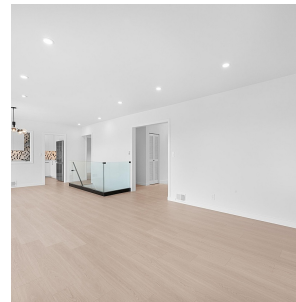


7736 Elford Street, Burnaby

\$2,099,000



VIEWS VIEWS VIEWS! 180 degrees view in the popular Burnaby Crest area. 2 Levels. 2,087sf completely renovated home. Renovations include brand new kitchen appliances and laundry set, countertops, updated bathroom, designer light fixtures, new flooring & paint. New vinyl windows. Mortgage helper suite in the walkout basement with new kitchen & updated bathroom. Main Floor OPEN floor plan with lots of windows to take advantage of the VIEWS. 350sf south facing Deck. Close to Crest Shopping Centre, Royal Square Mall & Lougheed Mall. School Catchment: Armstrong Elementary and Ecole Cariboo Hill Secondary. Walking distance to the Carver Christian school & St Michael's School. Laneway house potential to be verified with the city. Easy access to Hwy #1 & SFU. Ready to move in.

KEY INFORMATION

MLS® R2865347

Residential Detached

The Crest

4 Bedrooms

2 Bathrooms

2,087 SF

6,074 SF Lot

FEATURES

Year Built: 1955

Views: City, Mountain and River

Listed By: Oakwyn Realty Ltd.

rennie