

# 1213 Mount Fee Road, Whistler

\$2,749,000



Luxury meets adventure in this stunning duplex nestled in sunny Cheakamus Crossing. Boasting a unique fusion of mountain charm and modern glamour, this residence is a true gem. Step into a world of opulence with onyx and marble features throughout. The expansive living space flows seamlessly to the outdoor dining area and deluxe hot tub. The highlight of this home is undoubtedly the high-end kitchen featuring top-of-the-line Gaggenau appliances, Teppanyaki griddle, wok burner, in-counter steamer, and sleek custom cabinetry. Retreat to the sumptuous primary suite, where you'll find a stunning dressing room, soaker tub and separate rainfall shower. With its prime location, unparalleled craftsmanship, and luxurious finishes, this duplex offers the ultimate Whistler living experience.

## KEY INFORMATION

MLS® R2866225

Residential Attached

Cheakamus Crossing

3 Bedrooms

3 Bathrooms

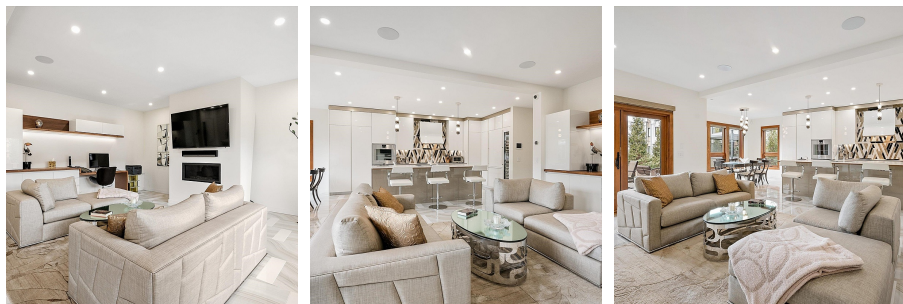
2,350 SF

## FEATURES

Year Built: 2016

Views: Mountain

Listed By: Whistler Real Estate Company Limited



rennie