

104 836 Twelfth Street, New Westminster

\$419,900



Welcome to London Place (built by Bosa). Located in the heart of West End New Westminster. Very functional layout featuring spacious living room with oak hardwood floors, large 1 Bedroom and In-Suite Storage(or den),with Balcony Located on the Quiet Side of the Building(not Ground Floor). 1 Secured Underground Parking Space and Storage Locker. Wheelchair access at Front Entrance. 2 Cats Allowed - Sorry no Dogs! Centrally Located, Close to Transit, Schools at all Levels Including Douglas College, Moody Park, Royal City Shopping Centre, Restaurants, Coffee Shops, Medical Services, Recreation and Much More.SHOWINGS BY APPOINTMENT.

KEY INFORMATION

MLS® R2866315

Residential Attached

West End

1 Bedroom

1 Bathroom

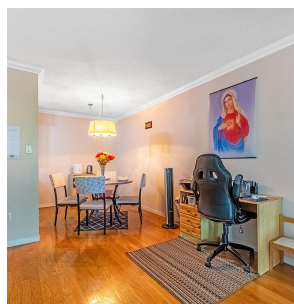
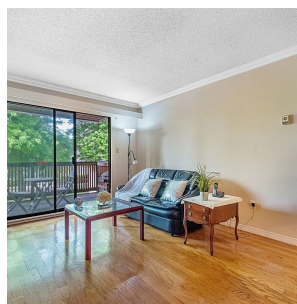
682 SF

\$416.60 Maintenance Fees

FEATURES

Year Built: 1984

Listed By: Team 3000 Realty Ltd.



rennie