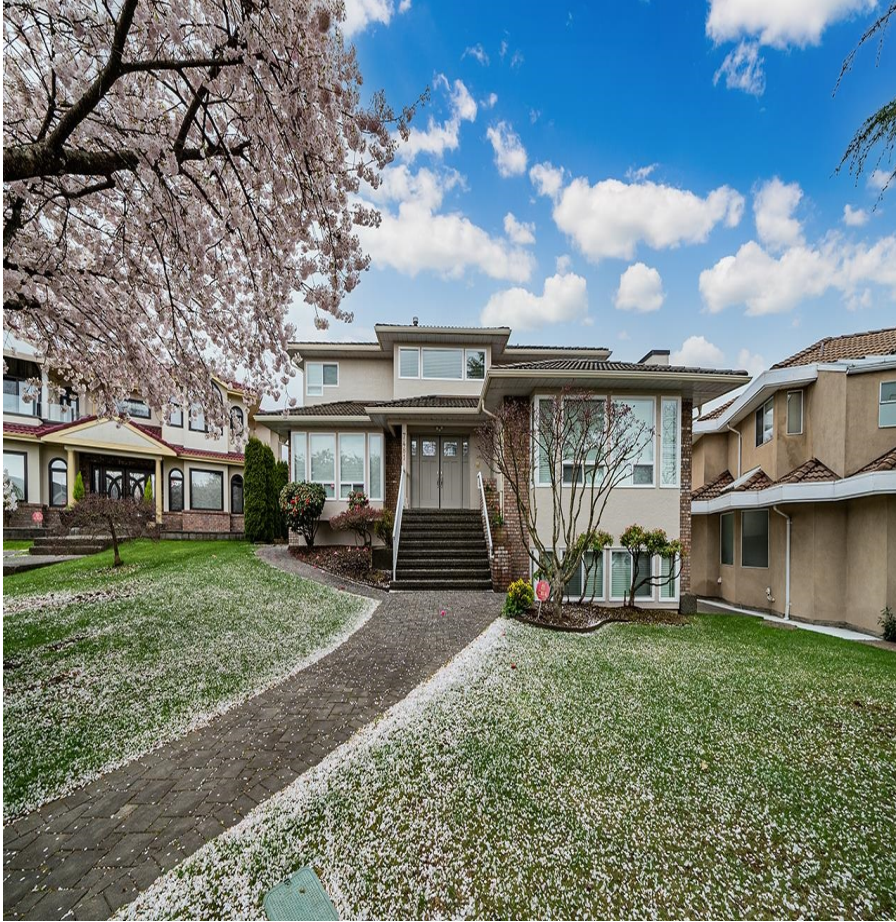


7481 Almond Place, Burnaby

\$2,649,000



This stunning mountain view home boasts 6 bedrooms and 5 bathrooms, offering a peaceful and convenient location within a mere 3-minute drive from schools. It's an excellent choice for families seeking access to top-tier schools in one of the most desirable areas of Burnaby. With easy access to highways, parks, malls and more, this property offers unparalleled convenience. Additionally, the safe and tranquil cul-de-sac location, separate basement entry, spacious floor plans spanning 3 levels, and large deck and fenced rear yard make it an irresistible choice. To top it off, the entire house has been renovated, ensuring that it's move-in ready! A must see!

KEY INFORMATION

MLS® R2866641

Residential Detached

The Crest

6 Bedrooms

5 Bathrooms

4,745 SF

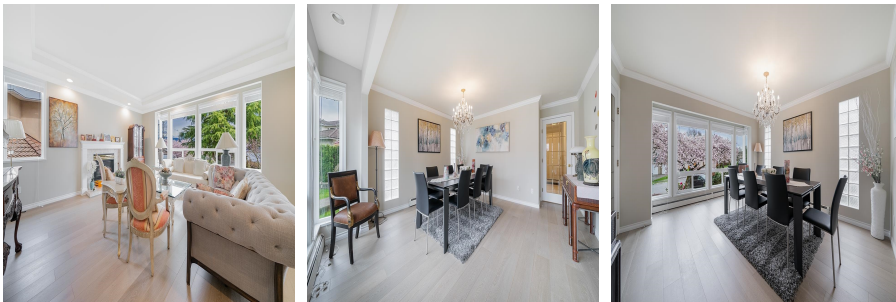
8,886 SF Lot

FEATURES

Year Built: 1990

Views: MOUNTAIN & CITY

Listed By: Pacific Evergreen Realty Ltd.



rennie