

# 59 6127 Eagle Ridge Crescent, Whistler

\$1,799,000



Just steps from the heart of Whistler Village this Whistler Cay Heights end-unit townhome awaits. Custom details surround you in this beautifully updated mountain getaway. Features include; Custom etched-glass stair rail, updated airtight wood burning fireplace with stunning rammed earth surround, slate tile accents, architectural wood inlays in the ceilings, skylights with built-in automated blinds, deck replacement with extension, huge crawlspace, along with beautifully updated kitchen, flooring & bathrooms. Eagle Ridge is a lovely quiet complex with tennis court and a playground which borders the Valley Trail & Whistler Golf Club. Currently prices significantly below BC Tas Assessed Valuation! This unit comes with plenty of parking for you and all your guests.

## KEY INFORMATION

MLS® R2867049

Residential Attached

Whistler Cay Heights

3 Bedrooms

3 Bathrooms

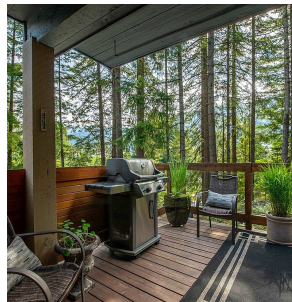
1,435 SF

## FEATURES

Year Built: 1989

Views: Whistler Blackcomb/Trees

Listed By: Angell Hasman & Associates Realty Ltd.



rennie