

# 18 9000 Ash Grove Crescent, Burnaby

\$1,030,000



Rarely available duplex style 2 level bright Southeast and spacious corner townhouse with garage in private & tranquil forest area in Burnaby North. About 1651 sq ft reverse plan. 2 bedrooms and bathroom on entry floor. Walk down to main floor with big living & family room off kitchen. Hugh master bedroom has full ensuite & walk in closet. 2 lovely separate patios facing private greenbelt as your huge backyard. Close to all levels of schools, recreation, transit and walking trails. Minutes to SFU & Skytrain station, Lougheed Shopping Centre, Costco Wholesale.

## KEY INFORMATION

MLS® R2867201

Residential Attached

Forest Hills

3 Bedrooms

3 Bathrooms

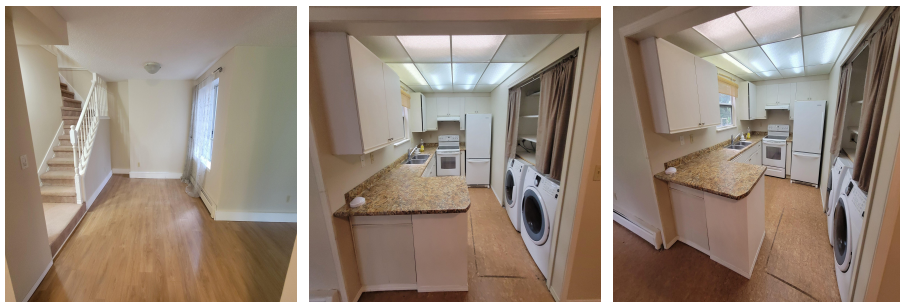
1,651 SF

## FEATURES

Year Built: 1986

Views: GREENBELT

Listed By: Macdonald Realty Westmar



rennie