

8566 Ashleigh Mcivor Drive, Whistler

\$2,099,000



It's time to turn your dreams into reality and create your family legacy in Baxter Creek, where luxury reaches unprecedented levels. Positioned on an incline, this lot offers exceptional mountain views and abundant sunlight. Current zoning guidelines provide the opportunity to create additional basement space and with only Crown Land behind, you are assured of a private backyard. As a member of the Baxter Creek community, you'll enjoy exclusive access to the Resident's Club, featuring a saltwater pool, hot tub, and cozy fire pit area. Whistler, with boundless opportunities for adventure and exploring nature, beckons you to experience all that it has to offer. Seize this moment and bring your finest architectural visions to life.

KEY INFORMATION

MLS® R2867241

Land Only

Rainbow

0 Bedrooms

0 Bathrooms

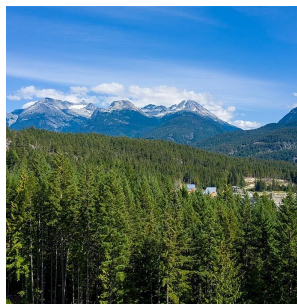
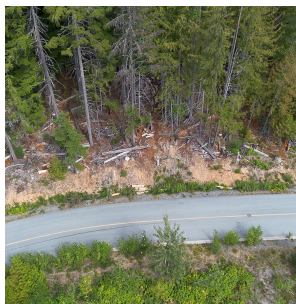
0 SF

11,302 SF Lot

FEATURES

Views: MOUNTAIN

Listed By: rennie & associates realty ltd.



Rob Palm PREC*
604.905.8833
rpalm@rennie.com
rennie.com/robpalm

rennie