

# 8570 Ashleigh Mcivor Drive, Whistler

\$2,099,000



This property offers an exceptional opportunity to be part of Phase 2 at Baxter Creek, where luxury living comes to life. Create your ideal mountain home complete with sun-drenched mountain vistas, unspoiled Crown Land stretching into the distance behind you, and within the framework of current zoning regulation, there is the potential to create a generous basement sanctuary. Envision the lifestyle you can create - the opportunities are as boundless as your imagination. That's not the sole advantage of this location, as a resident of Baxter Creek, you and your guests will enjoy access to the Baxter Creek Resident's Club, boasting a saltwater pool, hot tub, and inviting fire pit area. Reach out today, and let's turn your vision into an extraordinary Whistler reality.

## KEY INFORMATION

MLS® R2867242

Land Only

Rainbow

0 Bedrooms

0 Bathrooms

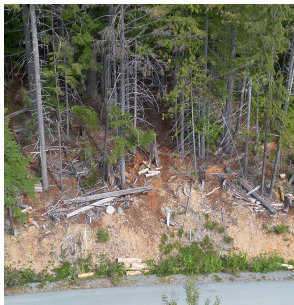
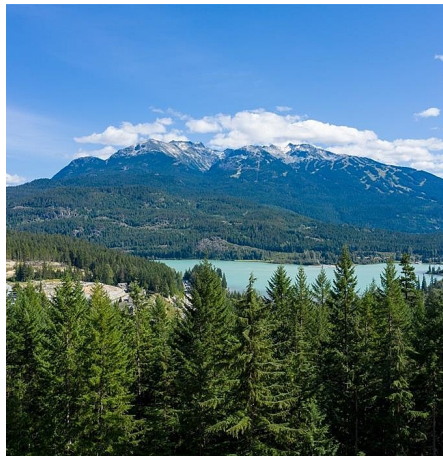
0 SF

11,086 SF Lot

## FEATURES

Views: MOUNTAIN

Listed By: rennie & associates realty ltd.



**Rob Palm** PREC\*  
604.905.8833  
rpalm@rennie.com  
rennie.com/robpalm

**rennie**