

# 12501 53 Avenue, Surrey

\$3,698,000



Location, location & location!!! This is an outstanding, south-facing investment acreage in the most desirable half-acre zoning West Panorama Ridge ("The Shaughnessy of Surrey" with a potential of subdivision). It's a RARE ocean view property bordering Joe Brown Park on its back, just as if living in your personal Stanley Park. The house on the property has 2 stories with an unfinished basement, which is located on a quiet street of natural privacy, only five minutes walk away from Colebrook Elementary school, and with easy access to Highways, commercial centers around. This is a great opportunity for you to build your own personal-desired mansion now or keep it for future development.

## KEY INFORMATION

MLS® R2867272

Residential Detached

Panorama Ridge

4 Bedrooms

3 Bathrooms

3,402 SF

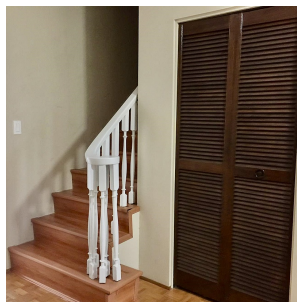
43,537 SF Lot

## FEATURES

Year Built: 1967

Views: Water

Listed By: LeHomes Realty Premier



rennie