

80 16433 19 Avenue, Surrey

\$979,800



STOP the search! This is THE ONE! Welcome to Berkeley Village! Centrally located in a fantastic growing community; This beautiful corner end-unit townhome boasts 3 beds + a den/2.5 baths w/ a wide open floor plan, overheight ceilings, Kitchen Aid stainless steel appliances w/ 5 burner gas range, quartz counters, large north & east windows in living room giving tons of natural light, one of the few homes in the development w/ A/C for those Summer Heat Domes, the HUGE 562 sq ft rooftop patio you've ALWAYS dreamed of & much more! Close to the brand new Ta'talu Elementary, Grandview Corners shopping, recreation, aquatic centre, and more w/ quick access to Hwy 99. Golf much? You have your pick of multiple courses only minutes away! Pets & rentals welcome! OPEN HOUSE: SAT 2PM-4PM

KEY INFORMATION

MLS® R2867751

Residential Attached

Pacific Douglas

3 Bedrooms

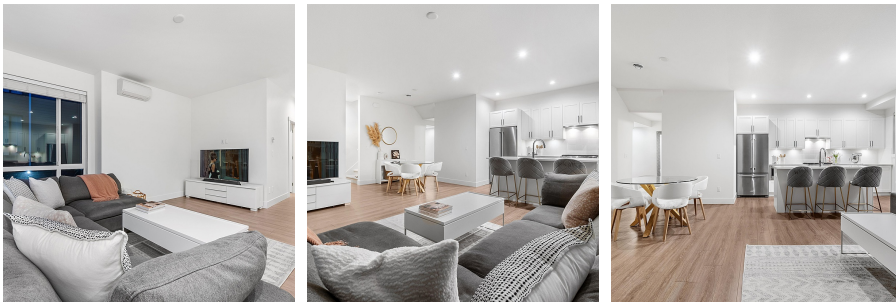
3 Bathrooms

1,521 SF

FEATURES

Year Built: 2019

Listed By: Real Broker



rennie