

26 11272 240 Street, Maple Ridge

\$833,000



Welcome Home to WILLOW & OAK. This bright 2 Large Bedroom, 2.5 bathroom home offers over 1400 square feet of living space. Attached 2 car tandem garage, modern quartz countertops, stainless steel appliance package and fenced backyard patio. European Convection heating system offers reduced hydro bill. Second level features 2 spacious bedrooms. Master Bedroom with vaulted ceilings and modern ensuite with oversized shower. Laundry is conveniently located on the bedroom level. Close to Save-On, Starbucks, public transportation and Kanaka Park. Only 5 minutes drive to the top-ranked Meadowridge School. Perfect home for families.

KEY INFORMATION

MLS® R2868003

Residential Attached

Cottonwood

2 Bedrooms

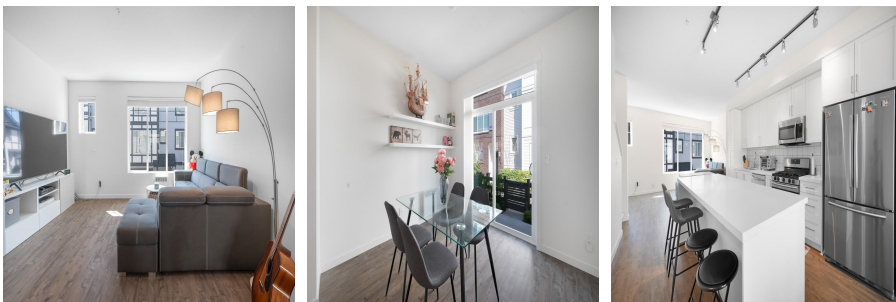
3 Bathrooms

1,406 SF

FEATURES

Year Built: 2019

Listed By: Pacific Evergreen Realty Ltd.



rennie