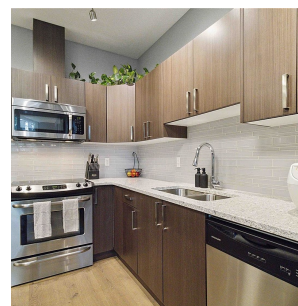
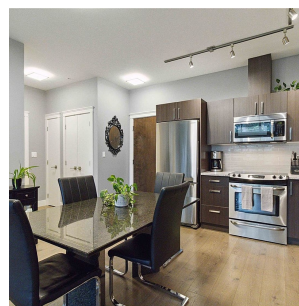
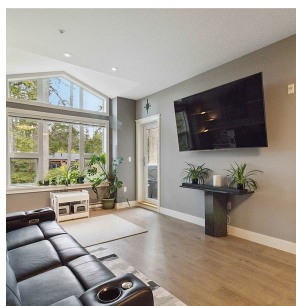


405 1900 Watkiss Way, View Royal

\$659,000



Welcome to your pet-friendly sanctuary nestled amidst nature's embrace! This charming abode boasts ample space with two bedrooms and two bathrooms on the top floor for ultimate tranquillity. The vaulted ceiling in the living room enhances the sense of openness while offering serene vistas that soothe the soul. Conveniently located near Burnside-Watkiss Park, Eagle View Elementary, and Victoria General Hospital, this home ensures easy access to schools, healthcare facilities, and outdoor recreation, including an off-leash dog park, Thetis Lake and Highland Pacific golf course. Eagle Creek Shopping and various dining options are also within reach, providing convenience and leisure at your fingertips. Inside, you'll find modern touches such as granite counters and high ceilings, elevating the ambiance with sophistication. The ensuite bathroom features luxurious heated tile floors, promising comfort during chilly mornings. Parking is a breeze, with TWO SECURE SPOTS and ample visitor parking. A dedicated bike storage room caters to outdoor enthusiasts, while the deck overlooks a serene, wooded path, perfect for unwinding after a busy day. Experience the ideal blend of convenience and tranquillity in this idyllic home, where every detail is designed to enhance your lifestyle. There is no size limit on pets! (id:56120)

KEY INFORMATION

MLS® 959621

Residential Attached

Hospital

2 Bedrooms

2 Bathrooms

930 SF

930 SF Lot

FEATURES

Year Built: 2016

Listed By: RE/MAX Camosun

rennie