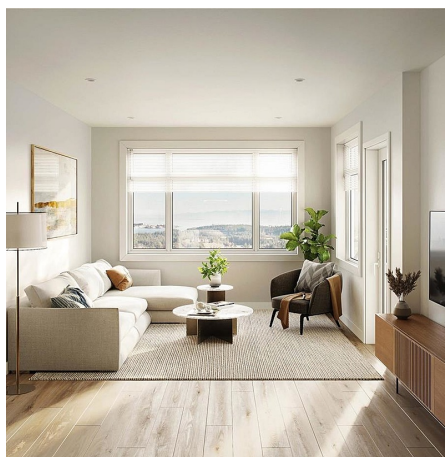


# 101 2000 West Park Lane, View Royal

\$539,900



SHOW CENTER AND BUILDING TOURS BY APPOINTMENT. Lakeside living with expansive views! Welcome to West Park One, an exclusive collection of 48 homes built by award winning local builder Homewood Constructors Ltd. Steps away from Thetis Lake & minutes from downtown Victoria. Contemporary, city-inspired design. 8 unique floorplans from 600sq' 1 bed to 1,125sq' 2 bed + den homes. Polished interiors available in 2 colour palettes, wide plank laminate floors, premium wood veneer cabinets, quartz countertops, ventilation system, exceptional sound insulation & energy-efficient Samsung appliances. Bathrooms w/ designer tiles, elegant fixtures & roomy walk-in showers with rain shower heads. 9-foot ceilings, custom open-island or galley-style kitchens are designed for easy use and entertaining. Large private patios on the ground floor & spacious balconies on upper-level homes. Live in tune with nature, breathe fresh air, hike through lush forests & go for long walks along the coast. Pre-construction pricing. (id:56120)



## KEY INFORMATION

MLS® 956728

Residential Attached

Prior Lake

1 Bedroom

1 Bathroom

668 SF

598 SF Lot

## FEATURES

Year Built: 2025

Listed By: NAI Commercial (Victoria) Inc.

