

2505 1201 Marinaside Crescent, Vancouver

\$1,948,000



The Peninsula by Concord - one of Yaletown's best buildings. Step into this STUNNING 3 BED & FLEX, with almost 1300 SF of open concept living w/BREATHTAKING WATER views from every room. Start your day from an indulgent KING sized primary w/walk thru closets & spa like bath. A sophisticated chef's kitchen w/premium appls, smart storage, extended stone counters & covered balcony for a sunset cocktail. Motorized blinds, Lutron lighting, HW floors & custom millwork make this a gem. Full amenities inc concierge, gym, pool, hot tub, sauna & media room. Walk out from a grand lobby & onto the Seawall, Urban Fare, Starbucks, Roundhouse Comm Ctr, Elsie Roy Elem, David Lam Park, Skytrain & all your Yaletown favorites. 2 parking. Piping done, new elevators almost complete.

KEY INFORMATION

MLS® R2868128

Residential Attached

Yaletown

3 Bedrooms

2 Bathrooms

1,270 SF

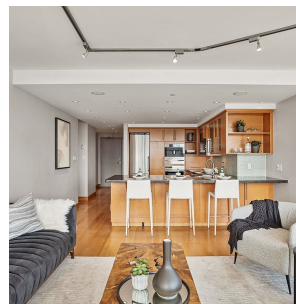
\$1,060.28 Maintenance Fees

FEATURES

Year Built: 1997

Views: MARINA, FALSE CREEK

Listed By: rennie & associates realty ltd.



Salina Kai PREC*
604.773.7013
skai@rennie.com
rennie.com/salinakai



Danny Chow PREC*
604.765.2469
dchow@rennie.com
rennie.com/dannychow

rennie