

# 13 15273 24 Avenue, Surrey

\$880,000



THE PENNINSULA- townhome living at its best! Centrally located & well-maintained. This end unit home sparkles with loads of natural light & a primary bedroom on the main floor. The rooms are spacious & well appointed the kitchen has been updated w/white cabinetry, new backsplash, S/S appliances, granite countertops w/under mount sink, designer paint, lighting & vinyl plank flooring. Radiant in floor heating with newer, hot water on demand boiler. A sun drenched eating area off the kitchen is perfect for that morning coffee. Upstairs are 2 large bedrooms & office/flex room & full bathroom. A large private outdoor patio area is a great place to escape. The Peninsula is one of South Surrey's most popular complexes & is close to shopping restaurants & transportation. 55+ complex.

## KEY INFORMATION

MLS® R2868413

Residential Attached

King George Corridor

3 Bedrooms

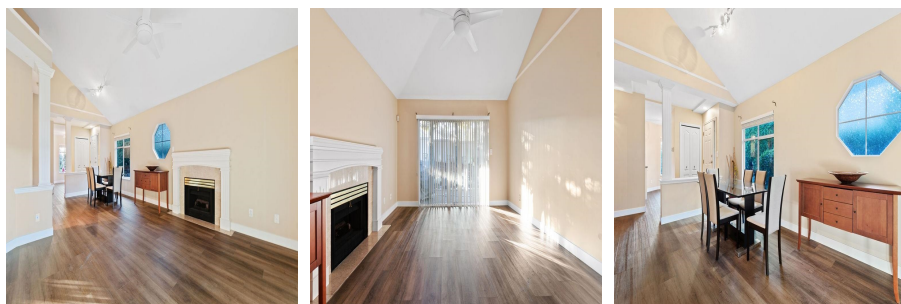
3 Bathrooms

1,640 SF

## FEATURES

Year Built: 1992

Listed By: Stilhavn Real Estate Services



rennie