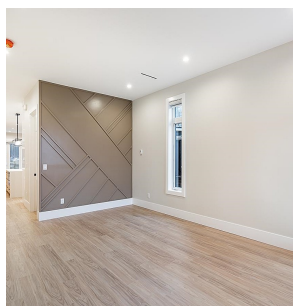


1 4096 Nithsdale Street, Burnaby

\$1,998,000



Custom Built Duplex by a long-term experienced builder. Gorgeous Mountain VIEWS. 2 Levels. 1,859 sq ft. Open Floor Plan. 3 Bedrooms Up, 1 Bedroom/Den on Main. 3 & 1/2 Bathrooms. Main Floor, 10th ft Ceilings. Stylish with Sleek 2 Tone Wood Grain & White Acrylic Cabinetry in Modern Kitchen, Quartz Counters. Huge Waterfall Island. Electric F/P in the Family Room. Patio 30'1 x 23. Bosch Appls and Kohler fixtures. HRV, Hot Water Radiant Heat. A/C. Alarm with 360 degree Cameras. Benjamin Moore Paint throughout. Potential Studio-suite with a separate entrance. 2nd Level Deck 26'6 x 13'10. Attached Garage. 2-5-10 Home Warranty. Mins to K - 7 Cascade Heights Elem, Ecole Moscrop Sec, BCIT. Close to SFU, Crystal Mall, Metrotown Shopping and Brentwood Mall. Next door #2 also for sale.

KEY INFORMATION

MLS® R2868568

Residential Attached

Burnaby Hospital

3 Bedrooms

4 Bathrooms

1,859 SF

7,200 SF Lot

FEATURES

Year Built: 2024

Views: MOUNTAIN VIEWS

Listed By: RE/MAX Crest Realty

rennie