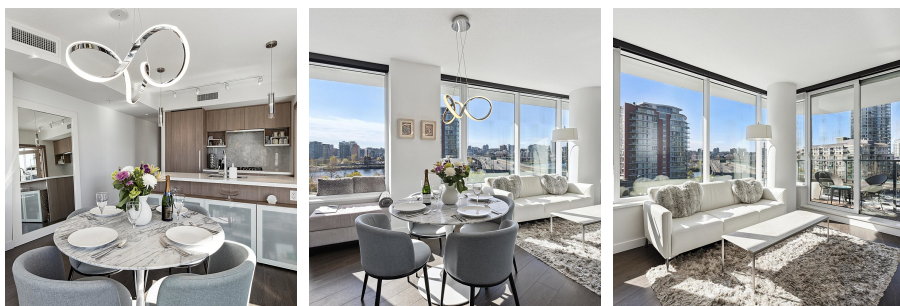


709 68 Smithe Street, Vancouver

\$1,198,800



Welcome to Concord's One Pacific offering iconic architecture with 1st class amenities & interiors. Your AIR CONDITIONED Southwest 2 bedroom + Den + Flex offers plenty of light & beautiful false creek views. Chef's kitchen include a 5 gas burner stove, integrated dishwasher, fridge/freezer & bar seating. Den is perfect for a home office & a balcony to BBQ and enjoy the beautiful sunsets. World class amen incl: Concierge, heated outdoor glass bottom pool, hot-tub, poolside fire-pit & cabanas & access to The Arc's amenities incl Canada's highest indoor glass bottom pool, sauna, steam, gym, party room & auto car wash station! One Pacific is steps from the seawall, Yaletown, marina & the entertainment district. UPGRADED parking beside top gate & locker incl.

KEY INFORMATION

MLS® R2868250

Residential Attached

Downtown

2 Bedrooms

2 Bathrooms

962 SF

\$693.24 Maintenance Fees

FEATURES

Year Built: 2016

Views: Water & City Views

Listed By: rennie & associates realty ltd.



Derek Kai PREC*
604.868.1666
dkai@rennie.com
rennie.com/derekkai

rennie