

Ph6 1988 E 49th Avenue, Vancouver

\$550,000



Great Penthouse Unit with a breathtaking city view. It is located in the quiet side of the building, facing the cool Northwest exposure of Mountain and Tree-lined city view. The open layout showcases the view as it overlooks through the balcony. Centrally, located, steps from restaurants, transit, shops, banks, park, etc.. Furnitures and some of the wall decor may be included in the price. One dog or one cat allowed. A must see and experience!

KEY INFORMATION

MLS® R2868868

Residential Attached

Killarney

1 Bedroom

1 Bathroom

684 SF

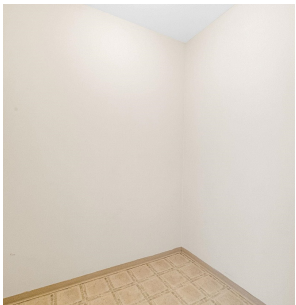
\$237.45 Maintenance Fees

FEATURES

Year Built: 2004

Views: NORTHWEST MOUNTAIN & CITY VIEW

Listed By: Multiple Realty Ltd.



rennie