

# 1109 4655 Valley Drive, Vancouver

\$850,000



Ideally situated across from the picturesque Quilchena Park, this spacious 1-bedroom, a den and Sunroom apartment with private patio embodies the timeless elegance of the Shaughnessy style architecture. The unit with NEW Painting features over-height ceiling, quartz countertops and StainlessSteel appliance, a gas range, designer lighting, made-to measure window treatments and hardwood flooring. An oversized patio, overlooking your private, fenced and quiet south facing yard. Close to shopping, recreation, transit and both level of schools, P. of Wales & Shaughnessy Elementary. The furniture in pictures is virtual staging. Measurements are approximate, Buyers or buyer agents to verify if deemed important. Floorplan 728 sqft measured from RealFoto.

## KEY INFORMATION

MLS® R2868019

Residential Attached

Quilchena

1 Bedroom

1 Bathroom

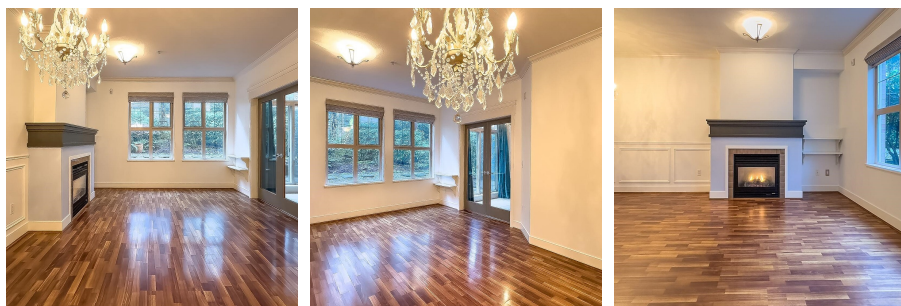
728 SF

\$430.00 Maintenance Fees

## FEATURES

Year Built: 2001

Listed By: RE/MAX Crest Realty



rennie