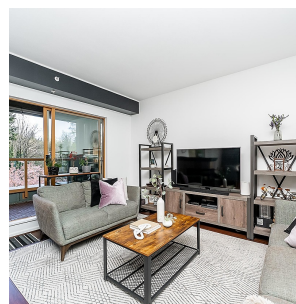
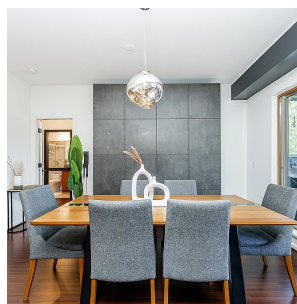
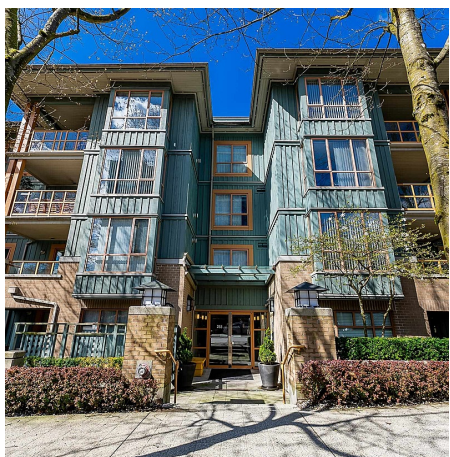


# 406 285 Newport Drive, Port Moody

\$869,000



Welcome to sought after Belcarra in Newport Village! This TOP floor, RARELY AVAILABLE plan offers an impressive living space that is perfect for entertaining, and has 2 bedrooms each with their own ensuite! Enjoy 1,096 sq ft with an open layout, generous sized rooms and an expansive, fully covered balcony off of the dining and living. A double sided fireplace can be enjoyed from the living and dining room creating a warm ambiance. The functional kitchen has an island, stone counters and updated appliances. Bedrooms are located on either side of the living space. Incredible privacy in the home with pretty views of cherry blossoms and trees. 2 Parking and locker. Set in the prime location of Newport with walking distance to amenities, rec centre, Skytrain, Brewery Row, & Rocky Point Park.

## KEY INFORMATION

MLS® R2869716

Residential Attached

North Shore Port Moody

2 Bedrooms

2 Bathrooms

1,096 SF

\$504.65 Maintenance Fees

## FEATURES

Year Built: 2003

Views: Mountains

Listed By: Royal LePage Elite West

rennie