

8271 Alpine Way, Whistler

\$2,999,000



This Whistler cabin is the perfect resort property that you look forward to staying in. Cabin sits on a very quiet lot with an loads of sunlight, not to mention fabulous mountain views. The home and the property are meticulously maintained. Main level of the home has two bedrooms, full bathroom, kitchen and open living room and dining room with views of the mountains. The top level of this home has the master bedroom with an en-suite bathroom, study and small loft area. The coziness of this home is a true 'Whistler cabin'. Enjoy burning the abundance of firewood on the property in the wood-burning stove as you enjoy the Mountain Views. Bonus; 1 bedroom suite is obtainable with minimum effort and minimum expense.

KEY INFORMATION

MLS® R2869662

Residential Detached

Alpine Meadows

3 Bedrooms

2 Bathrooms

1,300 SF

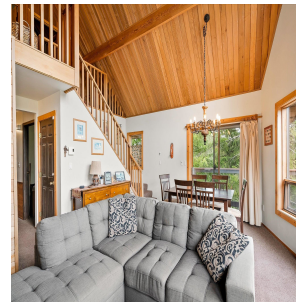
11,880 SF Lot

FEATURES

Year Built: 1981

Views: mountain views

Listed By: Sutton Group-West Coast Realty



rennie