

26540 126 Avenue, Maple Ridge

\$2,249,900



UNWIND IN NATURE | Nestled in **WHISPERING FALLS**, a premier community of Maple Ridge. This timeless home sits on a private 1.48 Acre greenbelt lot. Boasting 4,882 sqft of living space with 5 bed & 5 bath + over garage 1 BED FAMILY SUITE + Basement suite potential. Detailed throughout: Entertainers kitchen w/ WOLF appliances, Corian counters in kitchen & hardwood floors on main + sauna in basement. Lot: Manicured, south exposed & wrapped in greenbelt. Features 42x20 pool, hot tub, ample seating & patio spaces. Gated driveway leads to a 31x20 triple bay garage + RV parking. Pride of ownership w/ recent updates: Roof, pool liner, furnace, tankless HW & Hayward pool heater. Immerse yourself in nature with hiking, MTN Bike & ATV trails while minutes away from schools, shopping and transit.

KEY INFORMATION

MLS® R2869976

Residential Detached

Websters Corners

5 Bedrooms

5 Bathrooms

4,882 SF

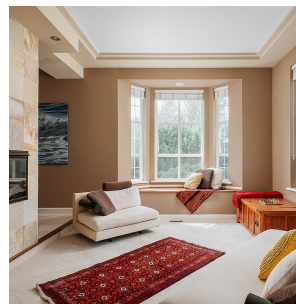
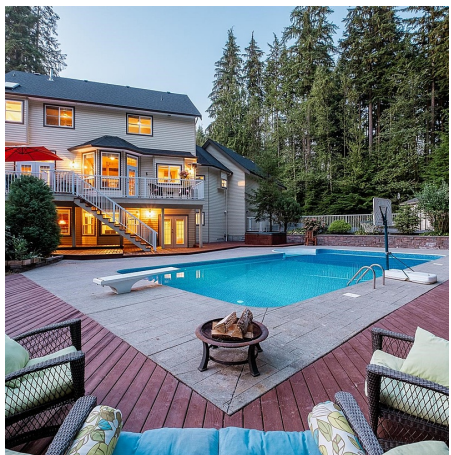
64,468 SF Lot

FEATURES

Year Built: 1995

Views: FOREST

Listed By: rennie & associates realty ltd.



Rob Breckwoldt PREC*
604.459.7778
rbreckwoldt@rennie.com
rennie.com/robbreckwoldt

rennie