

506 2550 Garden Drive, Vancouver

\$1,132,000



This stunning 2-bedroom plus den suite at 2550 Garden Drive features 1,008 sqft of open and light filled space. Incredible construction quality from trusted Developer Bucci Developments. Spacious and thoughtfully designed kitchen with premium integrated Fulgor & Milano appliances, wood cabinets and quartz counter. Further features include A/C, HRV system, 9' ceilings, engineered white oak floors, ample storage solutions, built-in laundry station, custom front entry storage niche, roller-shades, USB outlets and more! Just steps to Nanaimo St and Commercial Dr., Trout Lake Park and Commercial-Broadway Skytrain. Amenities include a social lounge, expansive outdoor terrace, garden plots and children's play area. One parking and a storage locker included! Schedule your viewing today!

KEY INFORMATION

MLS® R2870161

Residential Attached

Grandview Woodland

2 Bedrooms

2 Bathrooms

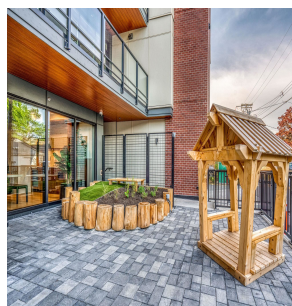
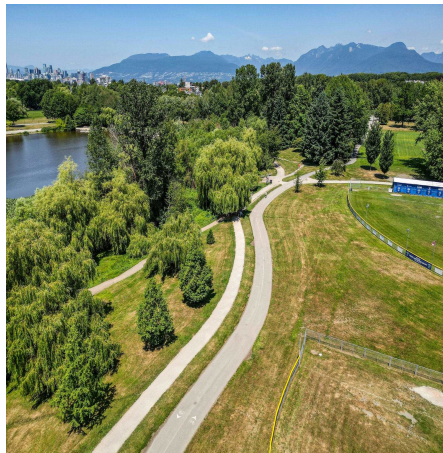
1,008 SF

\$0.51 Maintenance Fees

FEATURES

Year Built: 2023

Listed By: rennie & associates realty ltd.



Tyler Rodyniuk

778.987.1365

trodyniuk@rennie.com

rennie.com/tylerrodyniuk

rennie