

# 17765 92 Avenue, Surrey

\$5,888,000



Prime Development potential in Port Kells!  
Anniedale-Tynehead NCP designated as medium high density (15-30 units per acre). Right next to the designated school and community center site. Value in land. Great tenant would like to stay. Please call...

## KEY INFORMATION

MLS® R2868406

Residential Detached

Port Kells

2 Bedrooms

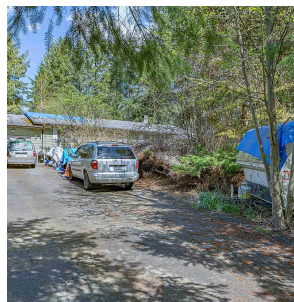
2 Bathrooms

1,456 SF

## FEATURES

Year Built: 1973

Listed By: Macdonald Realty Westmar



rennie