

# 85 19551 66 Avenue, Surrey

\$849,900



LOCATION AT ITS FINEST! Welcome to the Manhattan Sky development. Located in Cloverdale's most desirable area this CORNER unit townhouse has an open floor plan, gourmet kitchen w/ sleek stainless steel appliances, an island & quartz countertops, + an integrated living-dining area leading to a cozy outdoor patio. This 1573 sq ft 4 bed , 3 bathroom townhouse is one of the LARGEST in the complex & also includes double car garage, lots of natural light , fireplace ,Laminate flooring & a private fenced patio. Downstairs, the basement provides a versatile space perfect for a separate office or a bedroom for your guests.This Pet-friendly complex is located near schools, Shopping,Transit & proposed skytrain.Easy access to major routes. Just waiting for a new family to call this place HOME !

## KEY INFORMATION

MLS® R2866781

Residential Attached

Clayton

4 Bedrooms

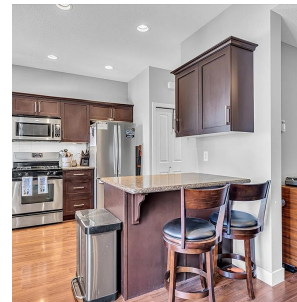
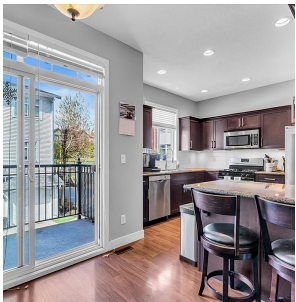
3 Bathrooms

1,573 SF

## FEATURES

Year Built: 2007

Listed By: Keller Williams Ocean Realty



rennie