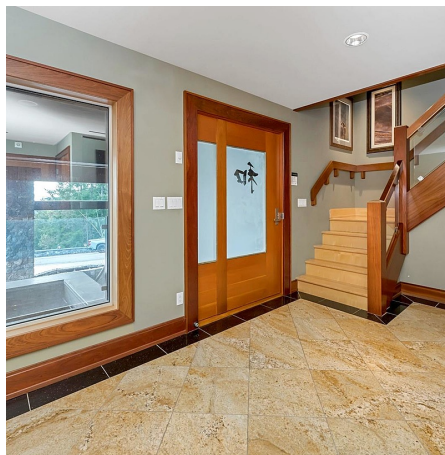
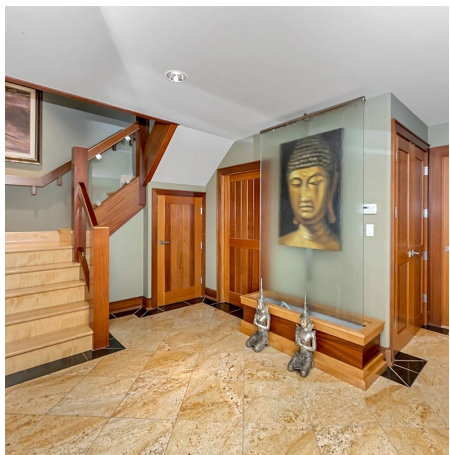


4948 Nagle Rd, Sooke

\$1,998,800



Priced for Quick Sale well below assessed value. The Eagles Perch sits on close to 3 acres of beautiful forest with views of Sooke Basin and the Olympic Mountains. Arrive at your Residence through your security gate and private drive leading to your remarkable entrance, a masterpiece of West Coast Architecture with Koi ponds, fountains and a stone Asian themed entrance. Walking inside you find an amazing combination of exotic woods with large beams which showcase the natural beauty. On the main lower you will find a gym, lounge and entertaining area with access to your hot-tub. The 2nd floor will capture your vision of what true elegant and luxurious living is with a gourmet kitchen looking out to spanning out to a 19-ft vaulted fir beam ceiling living room, dining room and 2nd living room with entrances to four patios. On the upper floor you'll find the primary suite with soaker tub, marble steam shower and views. Enjoy two more full brms, ensuites and a Den in the loft. Guest house 3 car garage and much more. Below Assessed Value. Also a Guest House connected and a 3 car garage. (id:56120)



KEY INFORMATION

MLS® 960210

Residential Detached

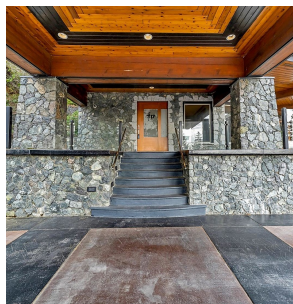
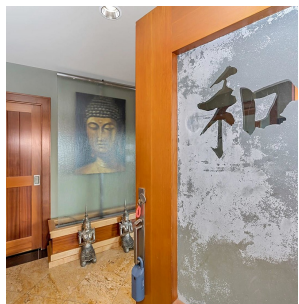
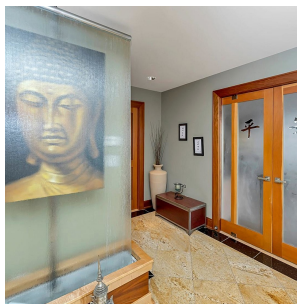
17 Mile

4 Bedrooms

7 Bathrooms

9,349 SF

127,195 SF Lot



FEATURES

Year Built: 2006

Listed By: Macdonald Realty Victoria

rennie