

310 33538 Marshall Road, Abbotsford

\$529,000



Experience the ideal fusion of urban convenience and rural tranquility with this charming 2-bed, 2-bath condo. Boasting a spacious open layout, a sleek kitchen featuring granite counters and stainless-steel appliances, and a dedicated compact office space, this residence offers both comfort and practicality. The two bedrooms, each with its own attached bathroom and generous storage in walk-in and walk-through closets, ensure privacy and convenience. Situated in a prime location near UFV, shopping centers, recreational amenities, and dining options, and with easy access to HWY 1, this condo offers unparalleled convenience.

KEY INFORMATION

MLS® R2870176

Residential Attached

Central Abbotsford

2 Bedrooms

2 Bathrooms

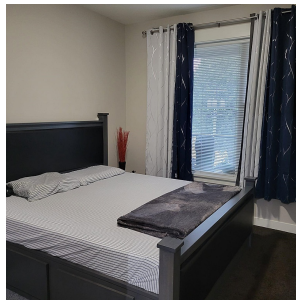
891 SF

\$274.00 Maintenance Fees

FEATURES

Year Built: 2009

Listed By: eXp Realty (Branch)



rennie