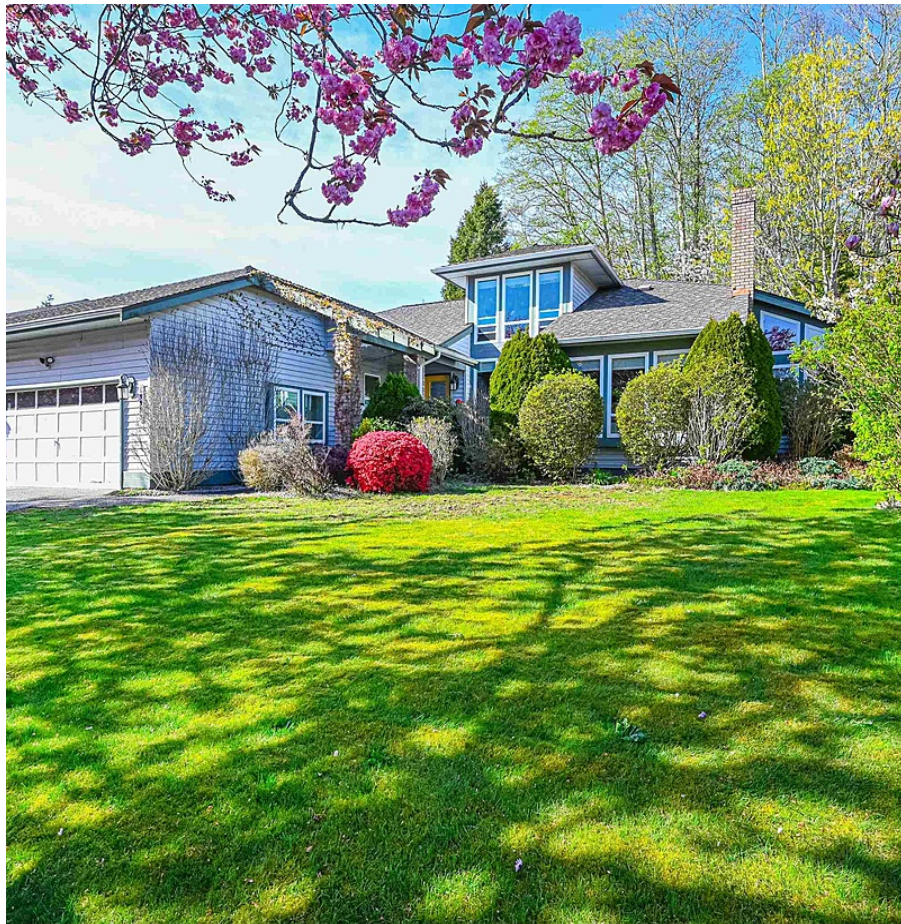


# 13383 14a Avenue, Surrey

\$2,190,000



This custom built luxurious rancher and loft is located in the heart of Marine Terrace with peek-a-boo ocean view. With three bedrooms plus den, the home is very bright and spacious with many skylights. Features include French doors, slate flooring, granite counter tops and en-suite bathroom with heated floor. Large finished workshop and tool shed. The lot is very large with only one neighbor. The home is very well-maintained by the tenant. School catchments are Ray Shephard and Elgin.

## KEY INFORMATION

MLS® R2870866

Residential Detached

Crescent Beach

3 Bedrooms

3 Bathrooms

2,897 SF

10,320 SF Lot

## FEATURES

Year Built: 1985

Listed By: Nu Stream Realty Inc.

