

2208 244 Sherbrooke Street, New Westminster

\$639,000



Yes, 2 parking spaces! Yes, over 1000 sq.ft! Step into this inviting corner unit flooded with natural light and boasting breathtaking views of the Fraser River and mountains from every angle, including the living room, kitchen, & master bedroom! With over 1000 SF of living space indoors and a spacious balcony outdoors, you'll have plenty of room to relax. Enjoy the convenience of privacy blinds throughout, complete with blackout blinds in both bedrooms. The open floorplan, enhanced by crown mouldings and baseboards, creates a welcoming ambiance. Abundant in-suite storage and a full-size washer and dryer add practicality to the space. Benefit from two full baths and updated appliances . Nestled in the family-friendly Cornerstone.

KEY INFORMATION

MLS® R2871057

Residential Attached

Sapperton

2 Bedrooms

2 Bathrooms

1,044 SF

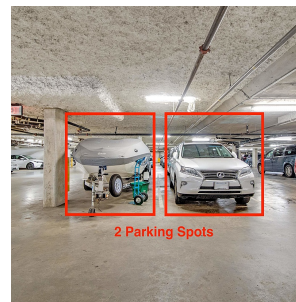
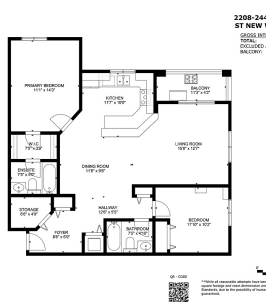
\$439.55 Maintenance Fees

FEATURES

Year Built: 2008

Views: city

Listed By: Royal Pacific Realty Corp.



rennie