

603 1201 Marinaside Crescent, Vancouver

\$1,680,000



Peninsula by Concord Pacific! In the heart of YALETOWN, is this 2 bed + 2 bath + den & solarium WATERFRONT resort style unit your next home? It offers the best views of False Creek and Quayside Marina at your eye level. 1st time on market and is well kept by the owners. 2 parking stalls are included. Amenities include indoor pool, sauna, gym and 24HR Concierge. Steps to trendy restaurants, supermarket, coffee shops, community center. 1st showings at the Open House on April 20-21, Sat-Sun, from 2-4PM. See you!

KEY INFORMATION

MLS® R2871072

Residential Attached

Yaletown

2 Bedrooms

2 Bathrooms

1,244 SF

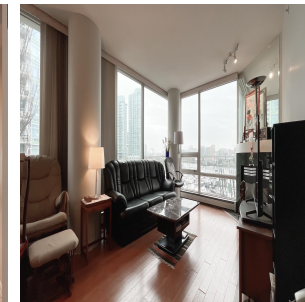
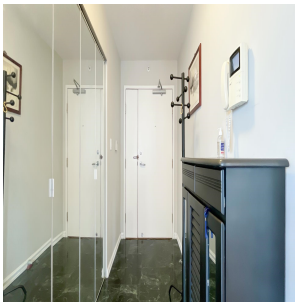
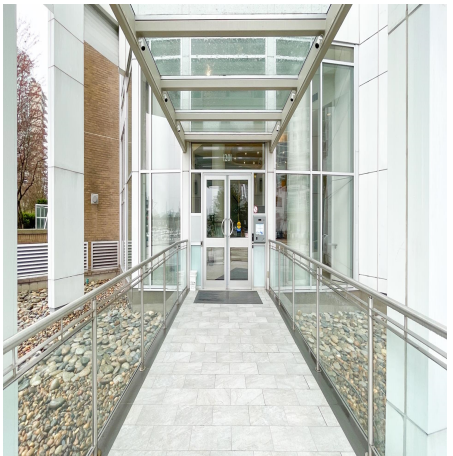
\$1,039.89 Maintenance Fees

FEATURES

Year Built: 1996

Views: WATER, CITY, MARINA

Listed By: Regent Park Realty Inc.



rennie