

303 2450 Church Street, Abbotsford

\$419,900



Discover serenity in the heart of the West Abbotsford with this inviting 55+ age restricted TOP floor North facing condo. Featuring 2 Bedrooms + 2 Bathrooms and nearly 1,100 Sq Ft of thoughtfully updated space this home offers a peaceful retreat in a central location. Inside modern updates throughout and abundant natural light create an inviting atmosphere perfect for both relaxation and comfortable living. Spacious kitchen, separate dining space, open living room, large bedrooms with the primary boasting an ensuite bathroom with walk in shower, in-suite laundry, and a serene balcony overlooking lush greenery with mountain views. Extremely well maintained complex and well run strata. 1 parking spot underground. Schedule your showing today and experience the lifestyle you want to live!

KEY INFORMATION

MLS® R2870419

Residential Attached

Abbotsford West

2 Bedrooms

2 Bathrooms

1,095 SF

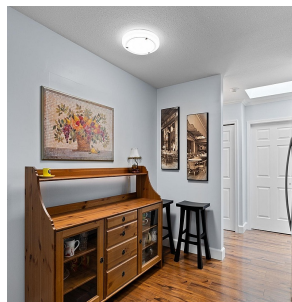
\$467.84 Maintenance Fees

FEATURES

Year Built: 1991

Views: Mountain

Listed By: eXp Realty (Branch)



rennie