

750 Glenmore Drive, Kelowna

\$1,800,000



EXCITING DEVELOPMENT OPPORTUNITY!
Prime corner location at Glenmore Drive and High Road offers a 1.4-acre land assembly opportunity. Potential for a 6-story residential building with ground-level commercial upon rezone to MF3 Zoning. Strategically positioned on a transit supportive corridor with easy access to downtown Kelowna, UBC Okanagan, and Kelowna International Airport. Walking distance to Knox Mountain and Kelowna Golf and Country Club. Stunning views of Knox Mountain and Dilworth Cliffs enhance its desirability. Must be acquired alongside other properties for comprehensive development. A premium prospect boasting accessibility to key amenities and promising returns. (id:56120)

KEY INFORMATION

MLS® 10310010

Residential Detached

Glenmore Clifton Dilworth

5 Bedrooms

3 Bathrooms

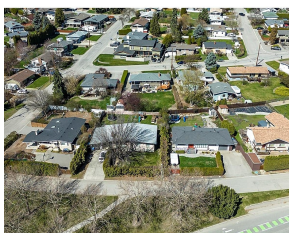
2,494 SF

10,454 SF Lot

FEATURES

Year Built: 1963

Listed By: Royal LePage Kelowna



rennie