

# 2 10529 Mcdonald Park Rd, Sidney

\$950,000



Welcome to everyone's favourite community on the island, Sidney By the Sea! This spacious townhome offers almost 1500 square feet of living space and only 3 units in the complex. Upstairs boasts 3 spacious bedrooms including a luxurious spa-inspired ensuite with dual sinks, glass shower, walk-in closet, and oversized laundry. The main floor showcases sleek hardwood, quartz countertops, subway tile backsplash, and top-notch stainless steel appliances at a large island with seating for 4. Extra features include a heat pump, crawl space, and a single attached garage with extra parking. Outside, a cozy patio beckons for gatherings. Pet-friendly and conveniently close to schools, shopping and transport hubs. With the marina down the street, this is the perfect home for boat enthusiasts. This property offers the perfect blend of luxury, convenience, and seaside charm. With this one you can lock up and go enjoy the island lifestyle! (id:56120)

## KEY INFORMATION

MLS® 960358

Residential Attached

Sidney North East

3 Bedrooms

3 Bathrooms

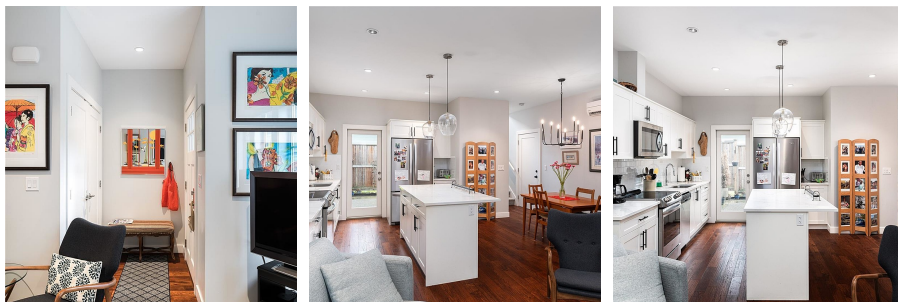
1,803 SF

2,344 SF Lot

## FEATURES

Year Built: 2018

Listed By: The Agency



rennie