

1379-1381 E 11th Avenue, Vancouver

\$2,499,800



An Extremely Rare Vancouver Special Style Up & Down Duplex located directly beside Cedar Cottage Park! Featuring two levels totalling 2810 sq ft with each unit containing 3 beds & 2 baths, separate laundry's, furnaces & hot water tanks. Renovations include kitchen cabinets/ countertops/appliances, laminate flooring downstairs and bathrooms through out. Conveniently bordering Cedar Cottage Park with lots of grass and trees, a playground & basket ball courts! Walk to popular Trout Lake, VCC-Clark Skytrain Station, Parks & Trails in the neighbourhood, & unlimited shops & restaurants along trendy Commercial Drive! Near Downtown Vancouver, T&T, Mount St Joseph Hospital, PNE/ Playland, Science World & Main Street with another popular strip of the latest eats and boutiques! Open: Sat, May 11, 2-4pm

KEY INFORMATION

MLS® R2871904

Residential Detached

Grandview Woodland

6 Bedrooms

4 Bathrooms

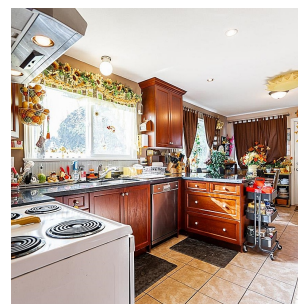
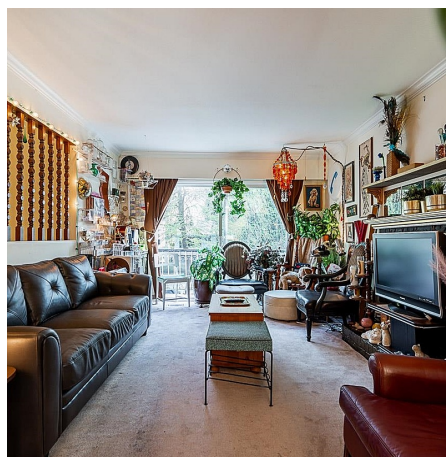
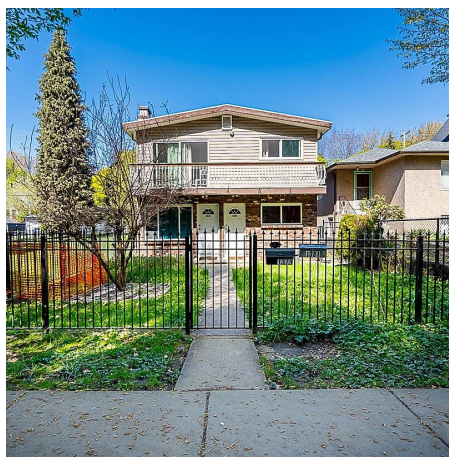
2,810 SF

4,026 SF Lot

FEATURES

Year Built: 1976

Listed By: RE/MAX Crest Realty



rennie